

Winter Pak ATV 2/4 Zone Heated Grips, Thumb Warmer and Controller

210029, 210050, 0631-0002, 0631-0016, ATV-21002-90, ATV-21005-00

DO NOT USE ON SNOWMOBILES OR OTHER DEVICES WITHOUT A REGULATED DC POWER SUPPLY. IT WILL NOT WORK!

Components: The Winter Pak from Symtec, Inc. includes a set of Hand Warmer Grips, an easy to apply Thumb Warmer, a dual function – 5 level Temperature Controller, the accessories to install these components, and Installation and Operating Instructions to assist vehicle owners. Some kits contain an accessory DC plug to use with the 4-Zone feature.

Installation Instructions:

*****It is important that the grips be warm before beginning installation**

Mounting Hand Warmer Grips and Thumb Warmer.

1. Remove the old grips and clean the handlebar surface of any adhesive or residue. Sand off any burrs or rough edges.
2. Put a pencil mark or piece of tape 4 5/8 inches from the ends of each handlebar before installing the grips to view how far the grips need to be pushed on.
3. The grips push on quite hard so be prepared to apply a considerable amount of force to install them. The resistance increases as the grips are pushed on so be prepared to push and twist the grips to finish installing. Do not hammer as this will destroy the heater.
4. Add the small plastic tube to the nozzle of a spray can of WD-40 so the complete inside of the grips can be coated.
5. Three (3) applications of WD-40 are required. Spray the inside of the left grip (the grip without the 6 pin connector attached) from top to bottom and the outside of the handlebar with a generous amount of WD-40.
6. Wait two minutes and repeat step 5.
7. Wait two more minutes and repeat step 5 again.
8. Position the left grip so the cord is at a 9:00 position. Align the grip and push it onto the handlebar. **IMPORTANT:** If the grip cannot be pushed completely on in ten seconds, remove immediately and start over. If grip is stuck half way on follow the enclosed failure instructions. (Also on Website www.symtec-inc.com) ****If installing onto a Bombardier vehicle with slightly larger handlebars, place grips in very hot or boiling water for three minutes and then spray with WD-40 and install.**
9. Position the right grip so the cord is at a 3:00 position. Repeat steps 5 to 8 for the right grip. The right grip has the 6 pin connector attached.
10. Peel the release paper from the Thumb Warmer and adhere it to the front side (the thumb side) of the throttle.
11. Slide the piece of heat shrink tubing over the Thumb Warmer and throttle and use a heat gun or other heat source to shrink the tubing but be careful not to burn it.
12. Use one cable tie on the throttle to secure the wires and be sure to provide a strain relief.
13. Push the throttle to full throttle position, route wires using cable ties, leaving relief in the wire so the throttle in the full open position does not strain the wire.
14. Mounting the Temperature Controller:

Determine if there is room to mount the Temperature Controller on the handlebar. If this is a good location follow the Option A instructions and Figure 1 for the handlebar mounting. If the Controller

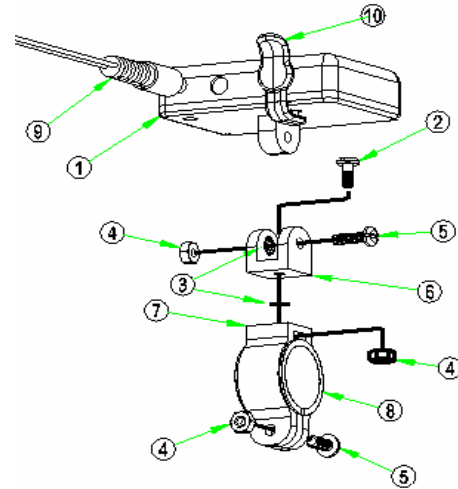


Figure 1

would be more accessible mounted on a panel or other surface, follow Option B mounting instructions and refer to Figure 2.

Option A: Figure 1

1. If the handlebar is the smaller 7/8" diameter type insert the rubber spacer (item 8) and slide the handlebar mount (item 7) over the bar. For larger diameter bars, place the piece of electrical tape around the bar at the chosen mounting location. Slide the handlebar mount (item 7) over the taped bar. Insert a nut (item 4) into the side of the mount with the 6 sided recess. Install a screw (item 5) and tighten lightly.
2. Attach the Pivot (item 6) to the handlebar mount (item 7) with the shorter screw (item 2) and nut (item 4) inserted in the mount. Install a lock washer (item 3) between the two but do not tighten the screw securely.
3. Place the tab on the bottom of the Temperature Controller (item 1) in the slot of the Pivot (item 6) and insert the screw (item 5). At this point rotate the handlebar mount (item 7), the Pivot, and the Temperature Controller to a location that provides the best view of the Controller to the driver.
4. Tighten the screw (item 5) on the bottom of the handlebar mount to secure it to the handlebar with nut (item 4).
5. Without moving the Pivot, remove the screw holding the Controller to the Pivot (item 5) and set the Controller aside.
6. Securely tighten the screw (item 2) that attaches the Pivot to the handlebar mount fixing the Pivot angle.
7. Attach the Temperature Controller to the Pivot with the screw (item 5) and nut placed in the 6 sided recess of the Pivot. Insert a lock washer (item 3) in the slot of the Pivot along with the tab from the bottom of the Temperature Controller as the screw is inserted. The lock washer will keep the Controller from moving when the screw is tightened.
8. Rotate the Controller to the correct angle for viewing and tighten the screw.

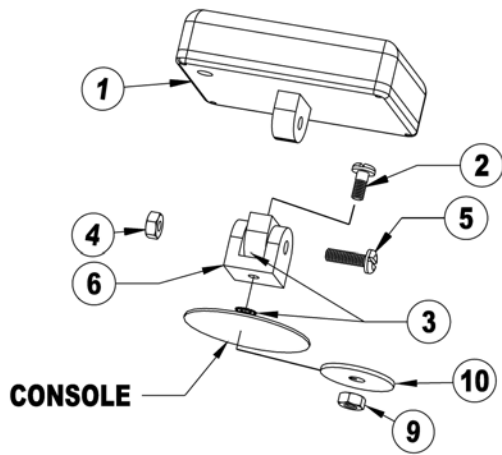


FIGURE 2

- Using the cable ties, route the wires from the Controller, Grips, and Thumb Warmer to a common connection point.

Option B: Figure 2

- Attach the Temperature Controller (item 1) to the Pivot (item 6) with screw (item 5) and nut (item 4).
- Choose a point on a panel or surface where the Controller will be mounted. The location should be chosen where a hole can be drilled in the panel and have access to install a washer and nut on the bottom side. Adjust the angle of the Controller for the best view for the driver and mark the angle that the Pivot will be installed.
- Drill a 5/32" hole in the panel where the pivot should be mounted. (Be sure that you do not drill into the gas tank)
- Separate the Controller and install the Pivot, at the angle marker previously, with the screw (item 5, removed from the bottom of the handlebar mount), fender washer (item 10), and locking nut (item 9). Place the locking washer (item 3) between the Pivot and the panel to keep it from rotating.
- Attach the Controller (item 1) to the Pivot with the screw (item 5) and nut placed in the 6 sided recess of the Pivot. Insert a lock washer (item 3) in the slot of the Pivot along with the tab from the bottom of the Controller as the screw is inserted. The locking washer will keep the Controller from moving when the screw is tightened.
- Rotate the Controller to the best angle for viewing and tighten the screw.
- Using the cable ties, route the wires from the Controller, Grips, and Thumb Warmer to a common connection point.

Electrical Connections: Figure 3

- Disconnect Positive (+) connector from the battery. Insert the pin connectors from the grip to the center holes of the 6 pin connector.

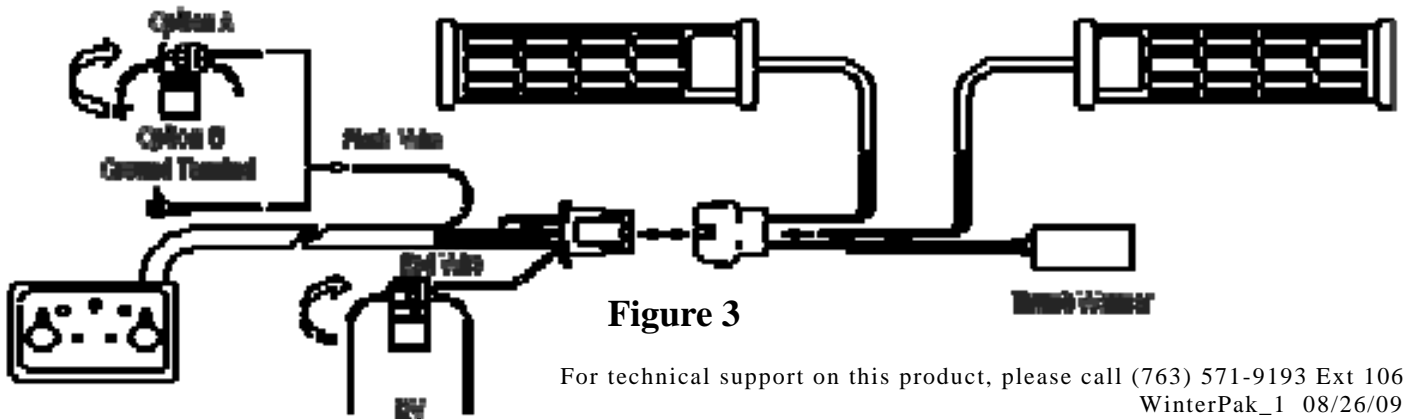


Figure 3

Assure they are secure and cannot come out.

- Connect the 6 pin Female Connector from the Grips and Thumb Warmer to the 6 pin Male Connector from the Temperature Controller.
- Connect the Red wire to 12V. Locate a voltage controlled power wire. We strongly recommend using the accessory plug or the hot wire to the headlight switch. Using the red tap connector, place this power wire into the continuous channel and insert the red wire (do not strip) into adjacent channel. Using pliers, press the metal contact flush with top of the connector. Close the hinged cover until latched.
- Connect the Black wire to a ground. For ground connection use a frame component or a ground wire, not a rubber isolated component such as a handlebar or a steering assembly. Use the red tap connector described in item 3 above or the ring terminal.

Operating Instructions: After the Winter Package is installed on your vehicle you will be able to select and adjust the heat level of the Hand Warmers and Thumb Warmer. There are switches under the red circle marked "SELECT" and "POWER SET" on the Temperature Controller and these will be pressed to make the adjustments. Reconnect positive terminal to the battery.

- When the ignition is turned on the LED above the word "GRIPS" will be on.
- With the "POWER SET" pad select the heat level for the Hand Warmer Grips. Each time the pad is pressed another LED will light indicating a higher heat level. Pressing the pad 5 times will provide the highest level of heat. When the pad is pressed again the heat will be off and the heat level selection can start again.
- Press the "SELECT" pad and the LED above the word "GRIPS" will go off and the LED above the word "THUMB" will light indicating the heat level of the Thumb Warmer can be set.
- Press the "POWER SET" pad to select the heat level for the Thumb Warmer. Setting the heat level for the Thumb Warmer will not affect the heat level set previously for the Hand Warmers.
- Pressing the "SELECT" pad will switch between the GRIP and THUMB allowing the heat level of each to be adjusted.
- The Temperature Controller will shut off automatically after 2 hours if no adjustments are made. To reactivate the Temperature Controller press the "SELECT" pad and reset the desired heat levels.
- Press both the "SELECT" and the "POWER SET" pads at the same time to change the light level of LED for night or day operation.

****Applies only to 4 zone Controllers:**

- The two plugs (10) keep dirt out of the Auxiliary 1 and 2 plugs. Keep these plugged when not in use. Each of these outputs supplies up to 60 watts of power for use with a heated seat, heated vest, foot warmers or any other 12 volt apparatus.
- One DC plug (9) is supplied with the kit which you can use to connect to a heated vest, seat heater or similar device.
- All controllers have memory functions such that if the power is shut off, and then restored, the previous heat settings will be restored.